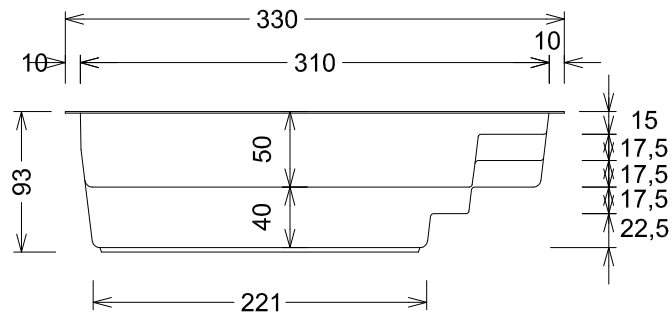
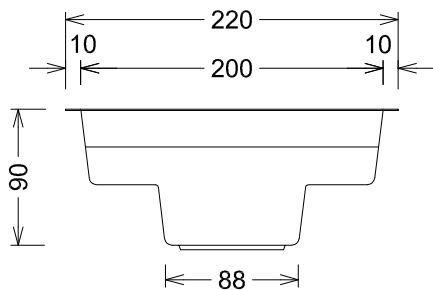


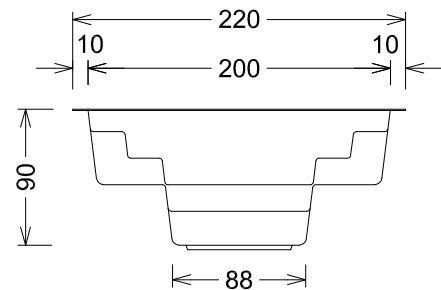
**Grundriss - Ground plan**



**Seitenansicht - Side view**



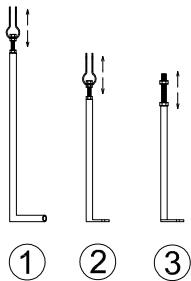
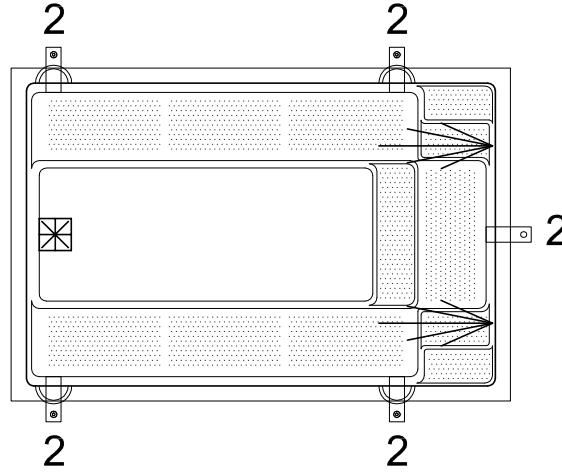
**Ansicht Skimmerseite - View skimmer side**



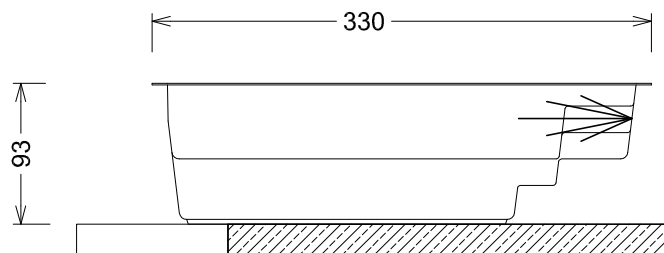
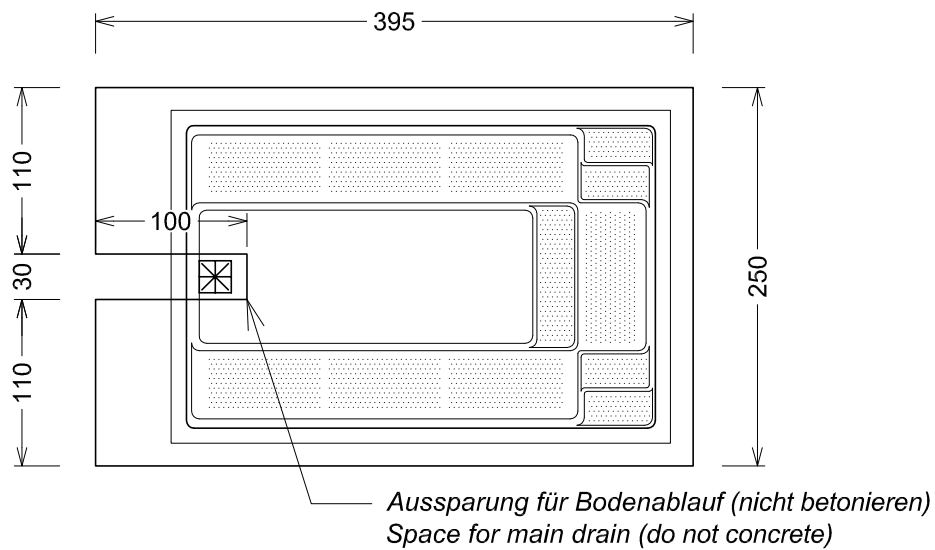
**Ansicht Treppenseite - View stair side**

**Gewicht Schwimmbecken - Pool weight**  
ca. 220 kg

**Wasserinhalt - Water content**  
ca. 3 m<sup>3</sup>



- 1 = Beckenstützen seitlich / lateral anchorages
- 2 = Beckenstützen vertikal (Zugstange) / vertical anchorages
- 3 = Beckenstützen vertikal M20 Druckstange / vertical anchorages M20



Fundamentplatte armiert laut örtlichen Bodenverhältnissen  
Foundation slab, reinforced according to the local ground condition